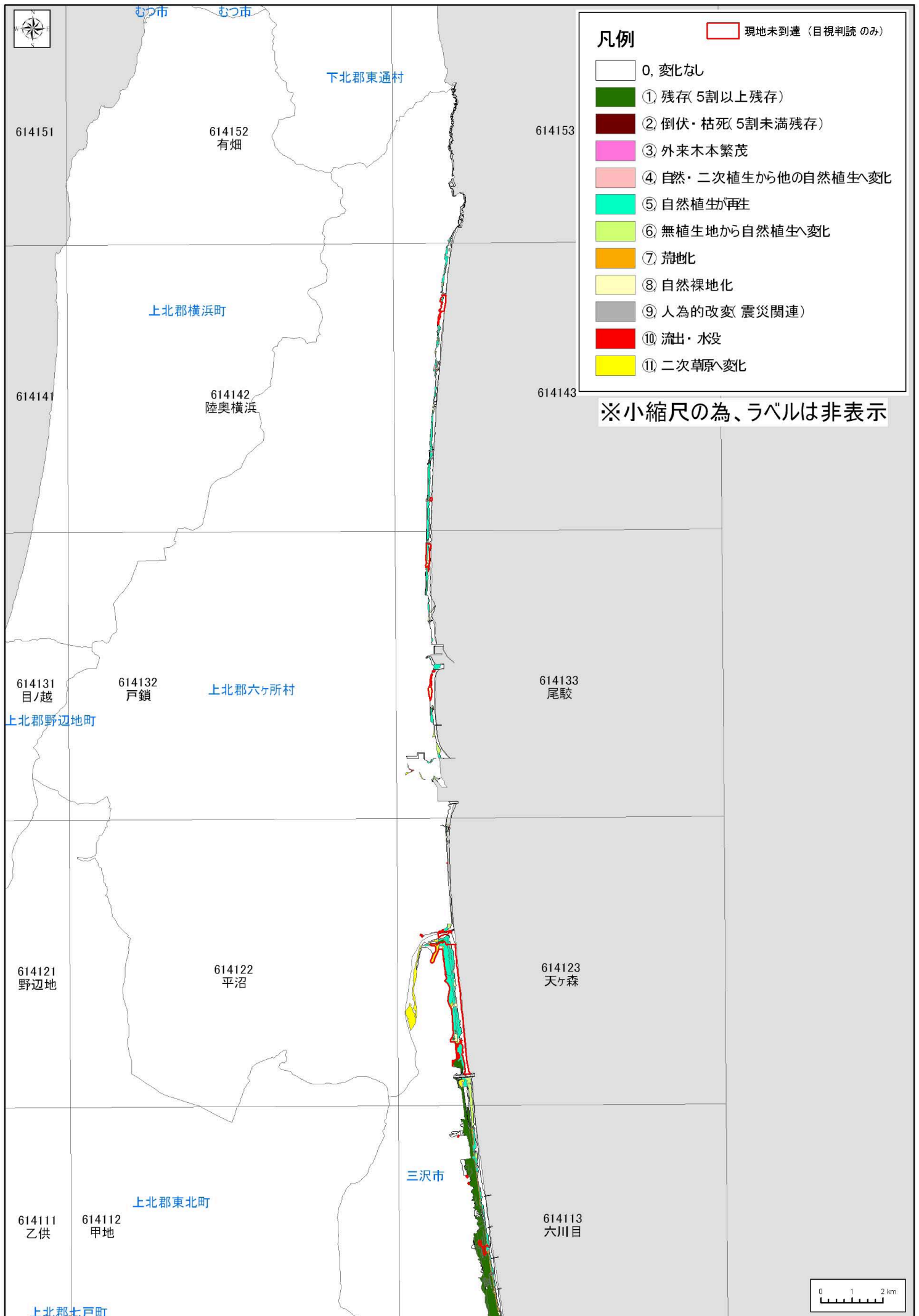
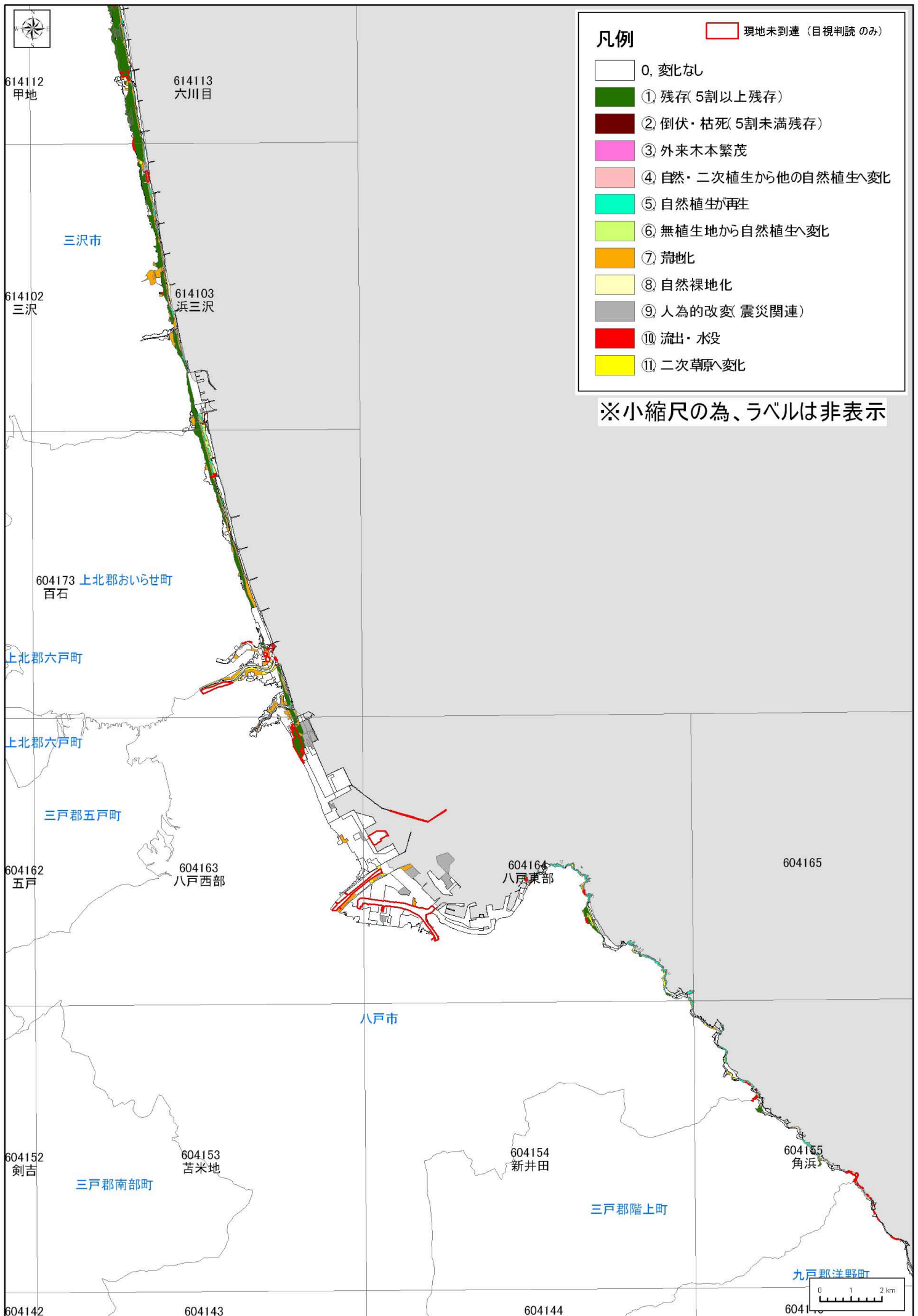


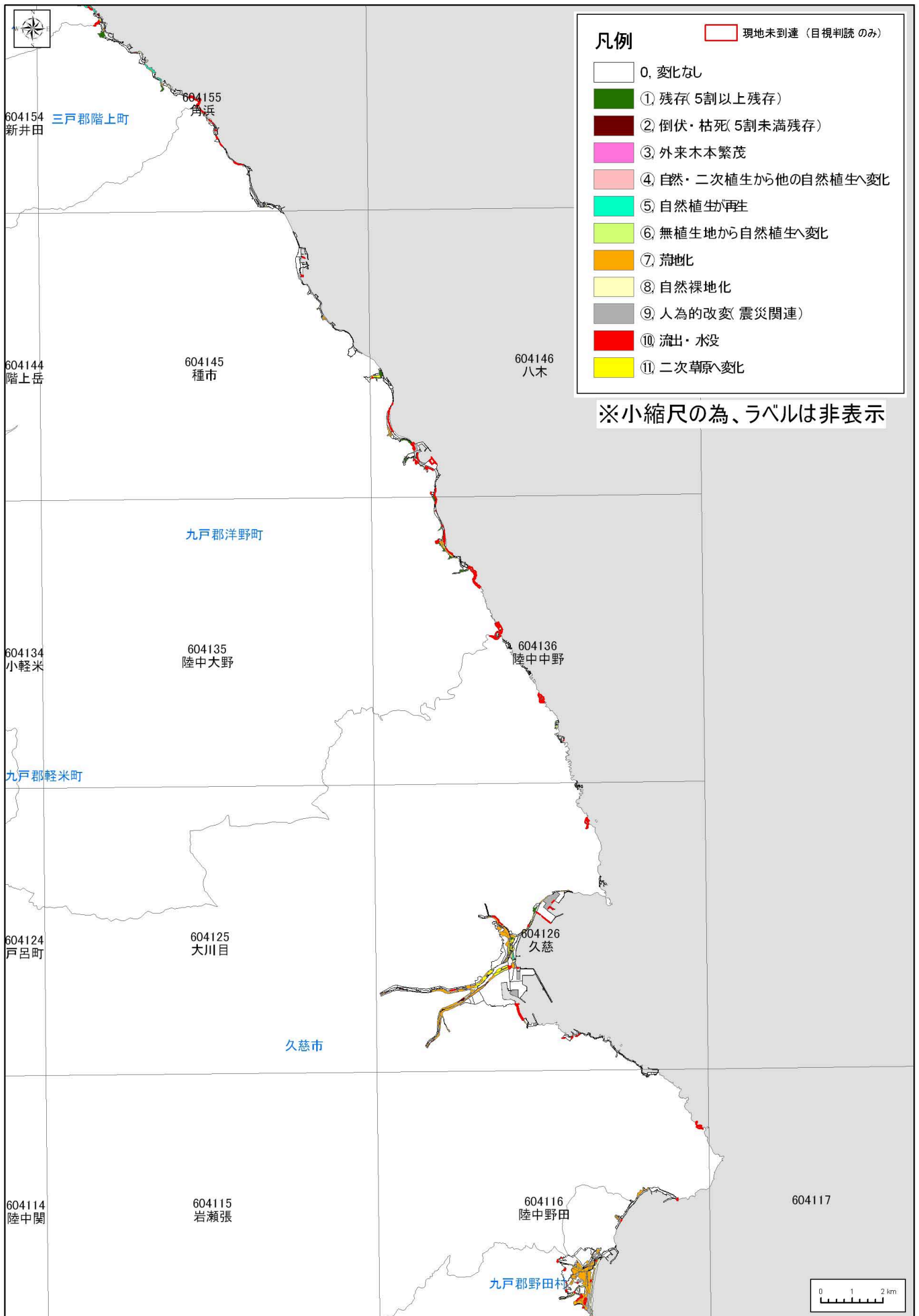
資料 4 植生調査 改变植生図



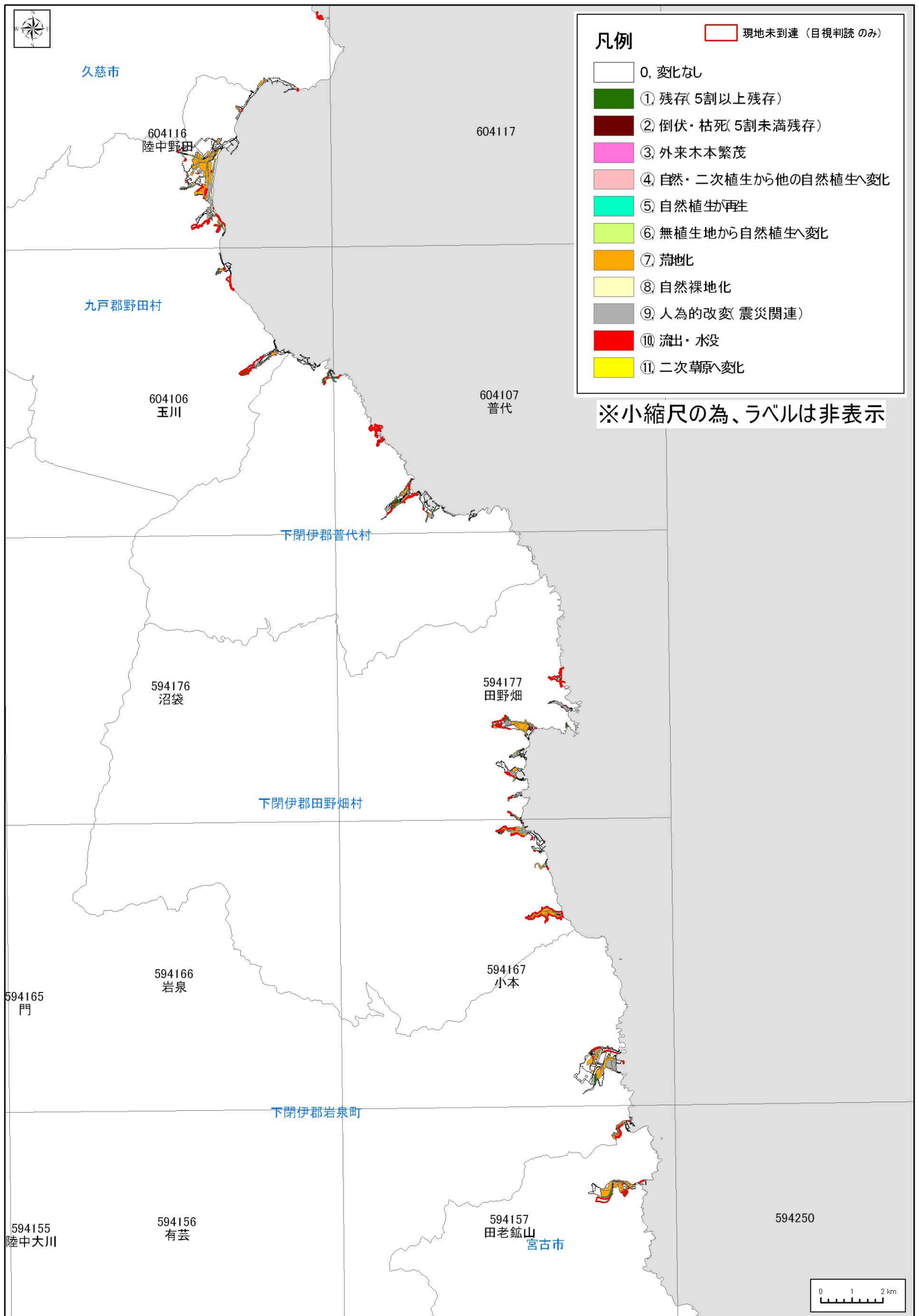
資4-1



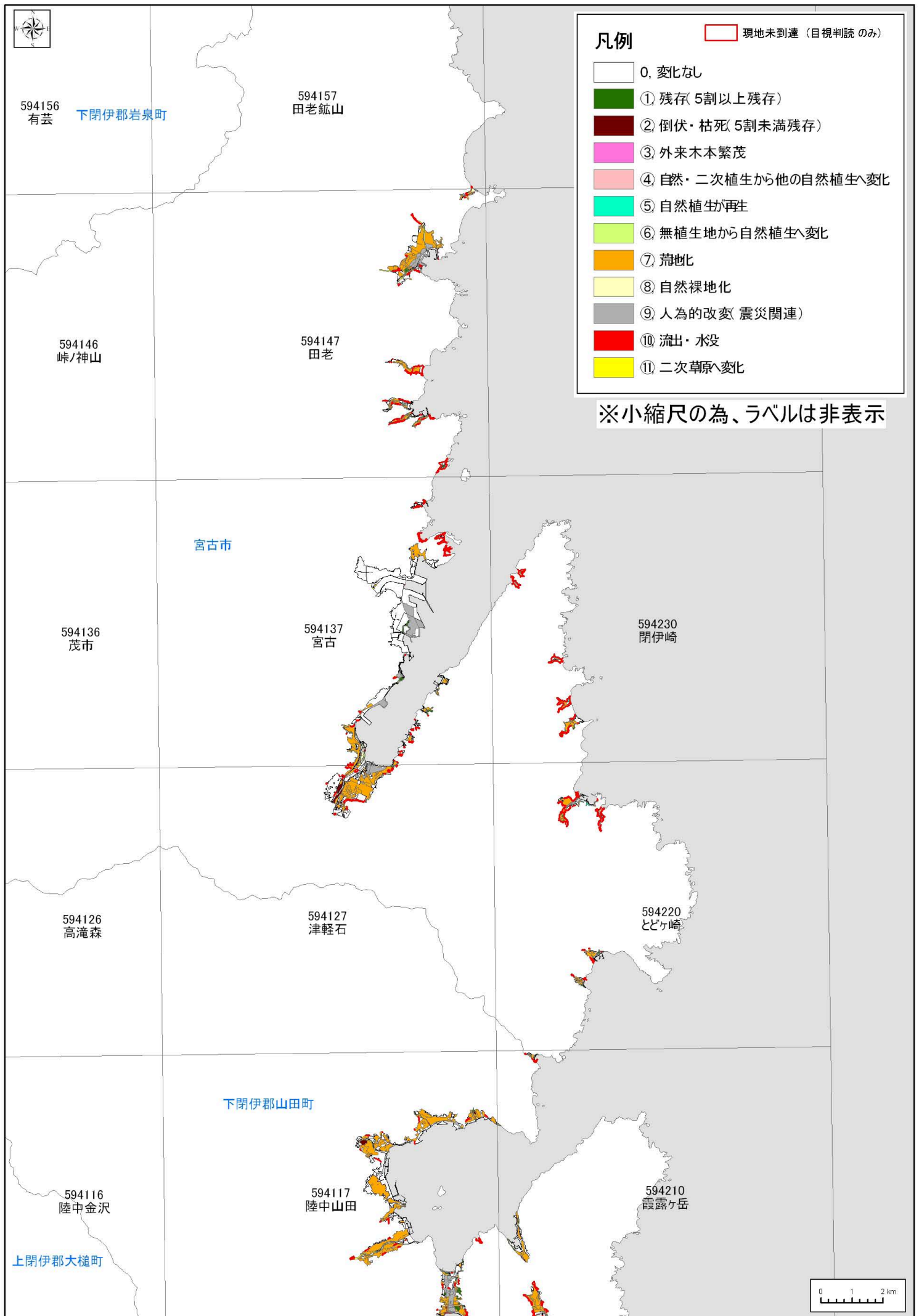
資4-2

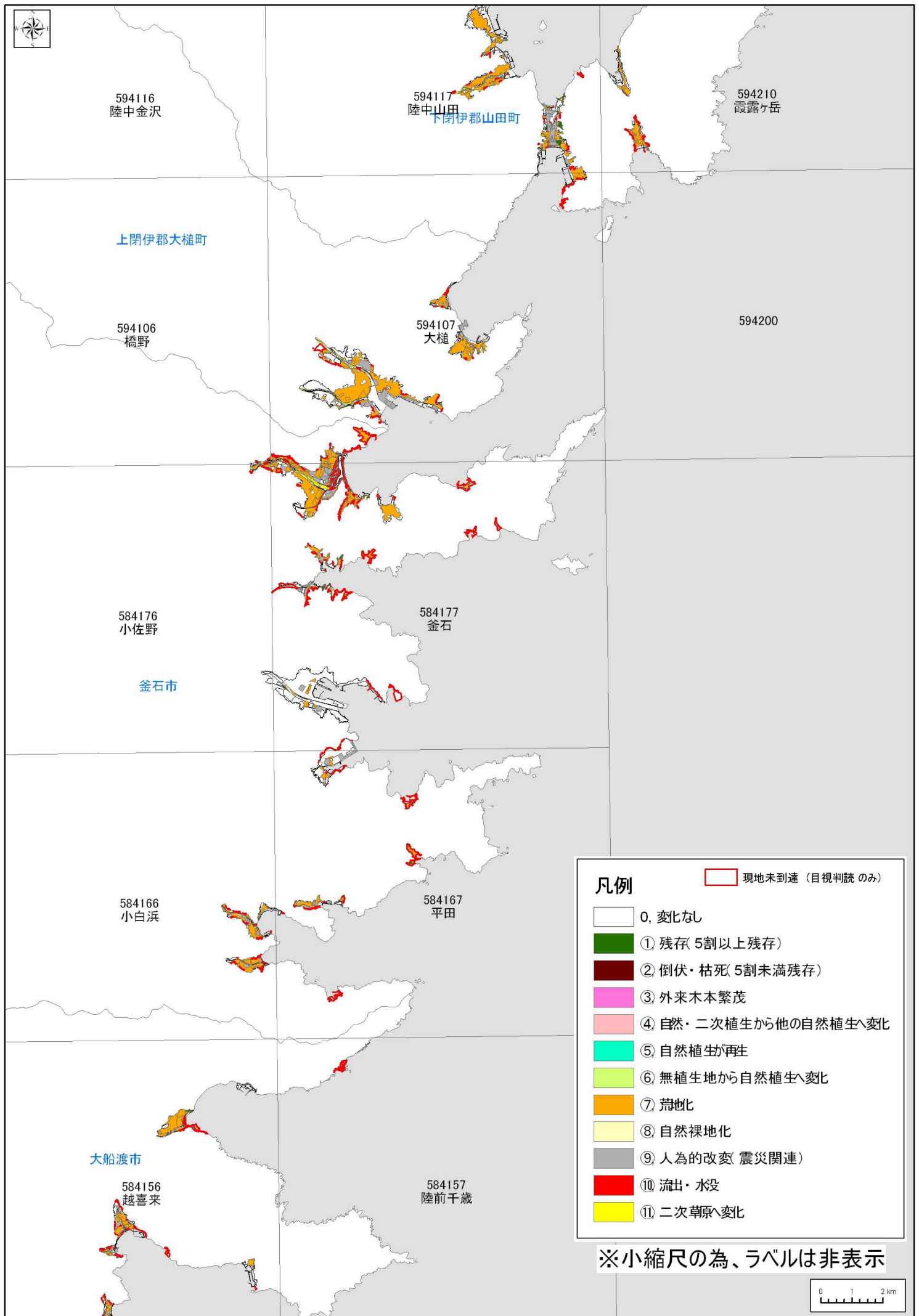


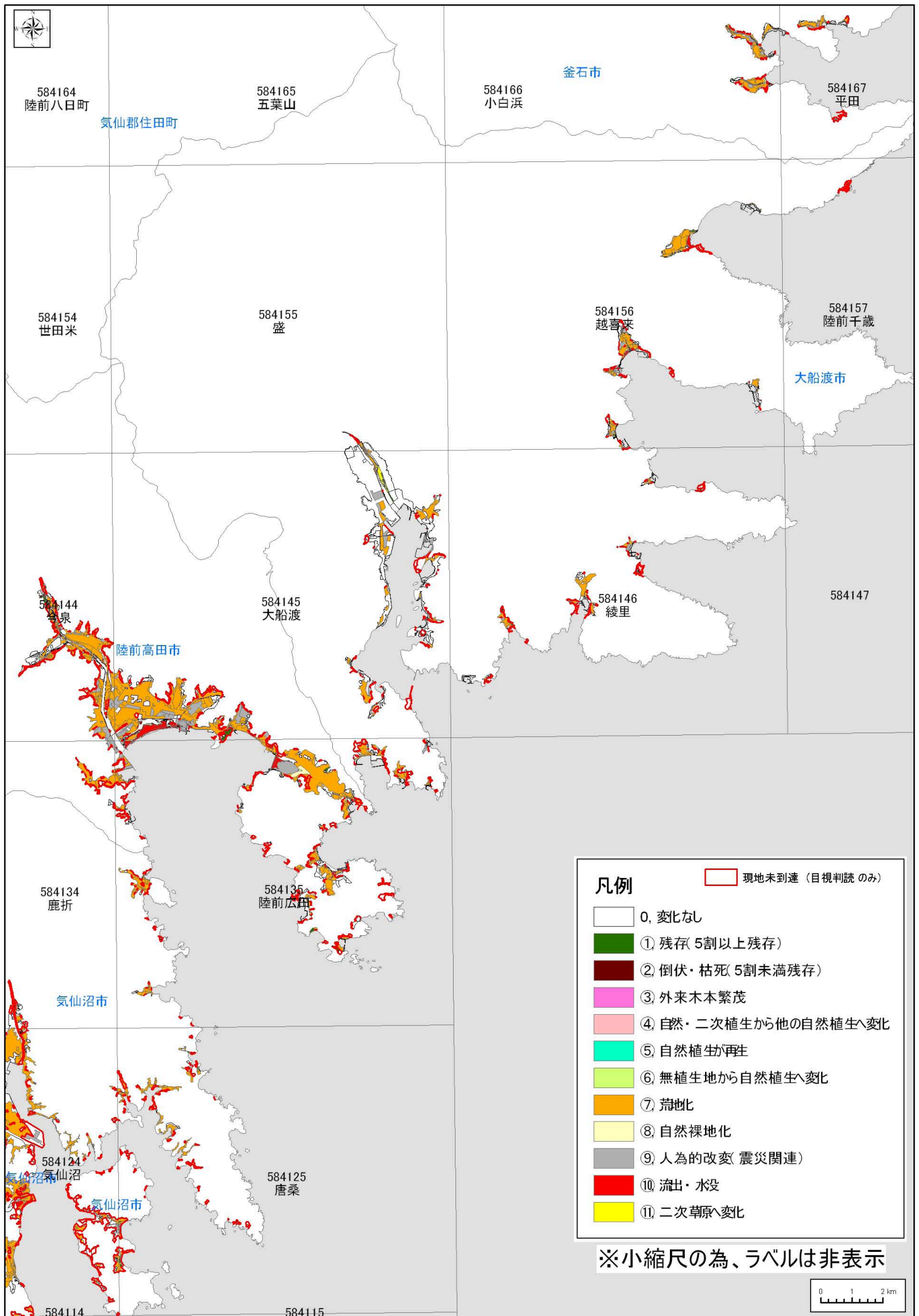
資4-3

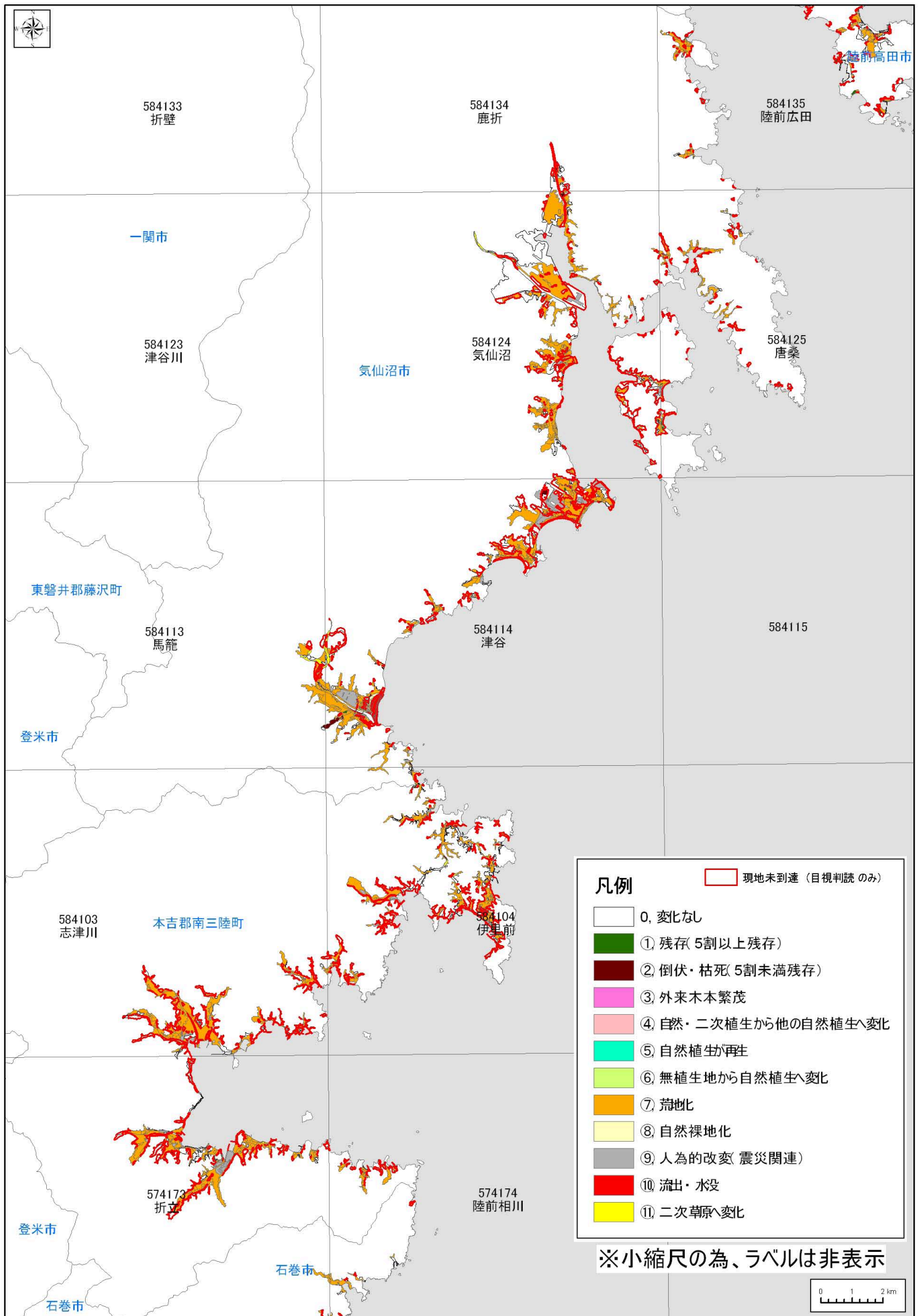


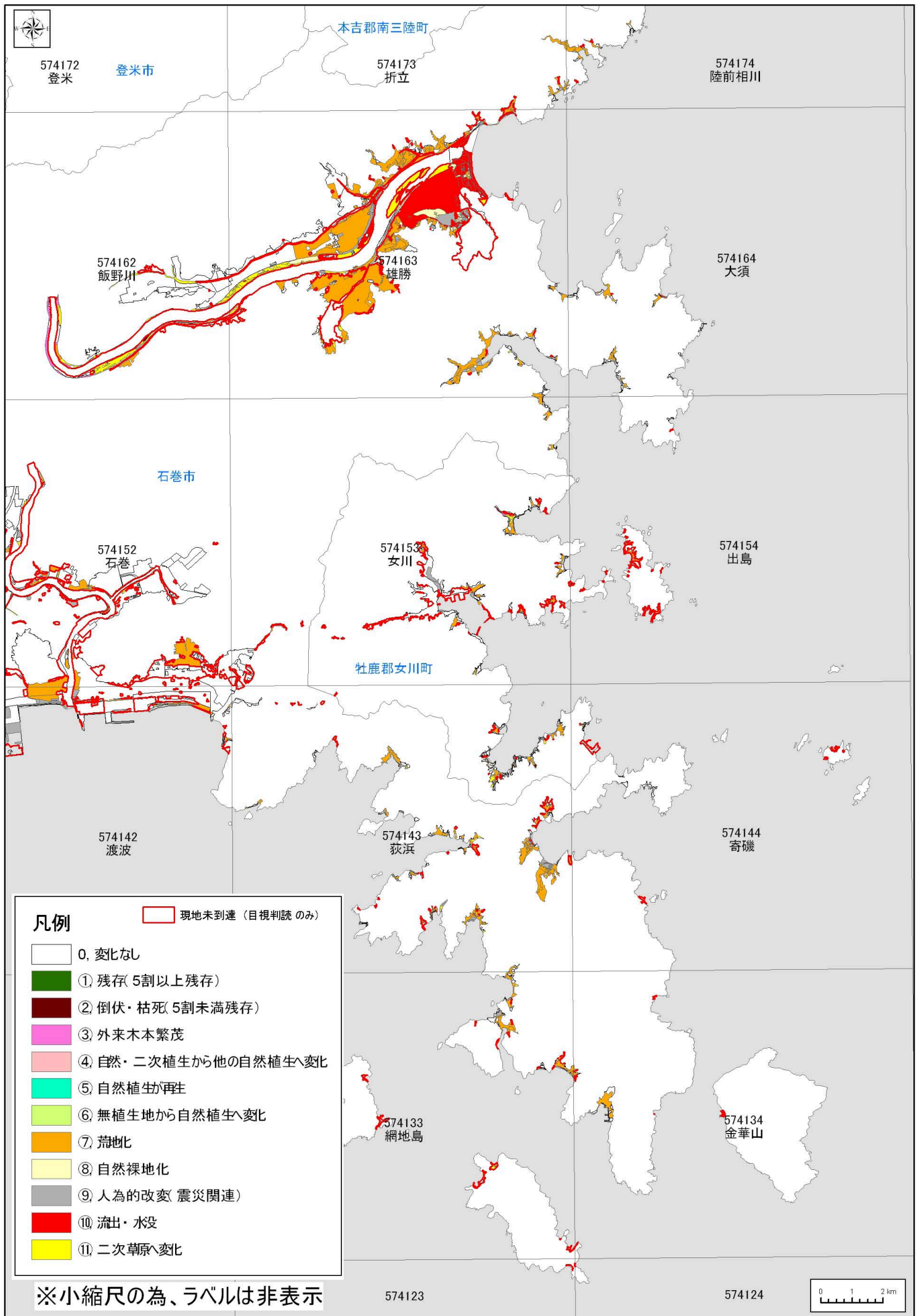
資4-4

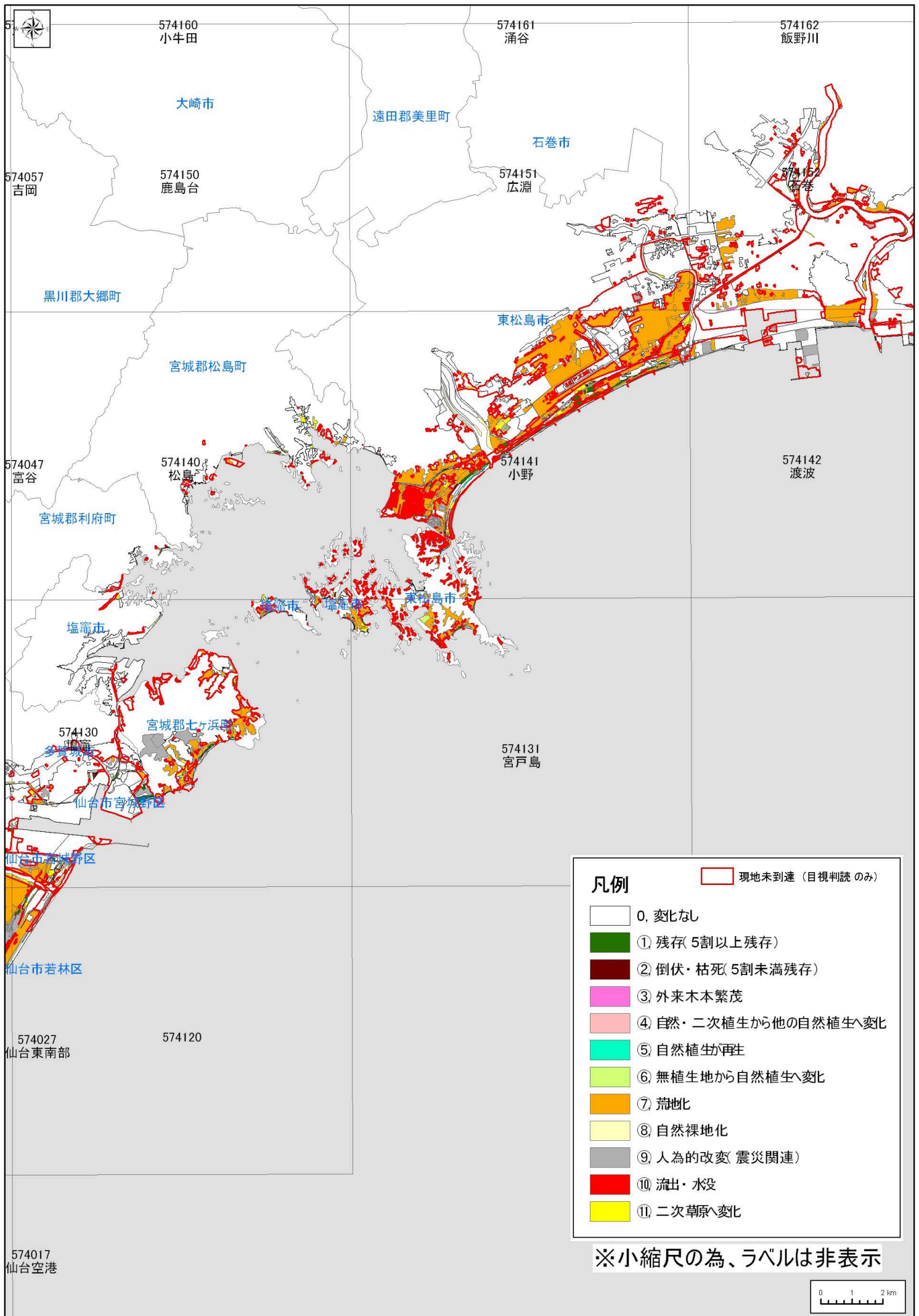


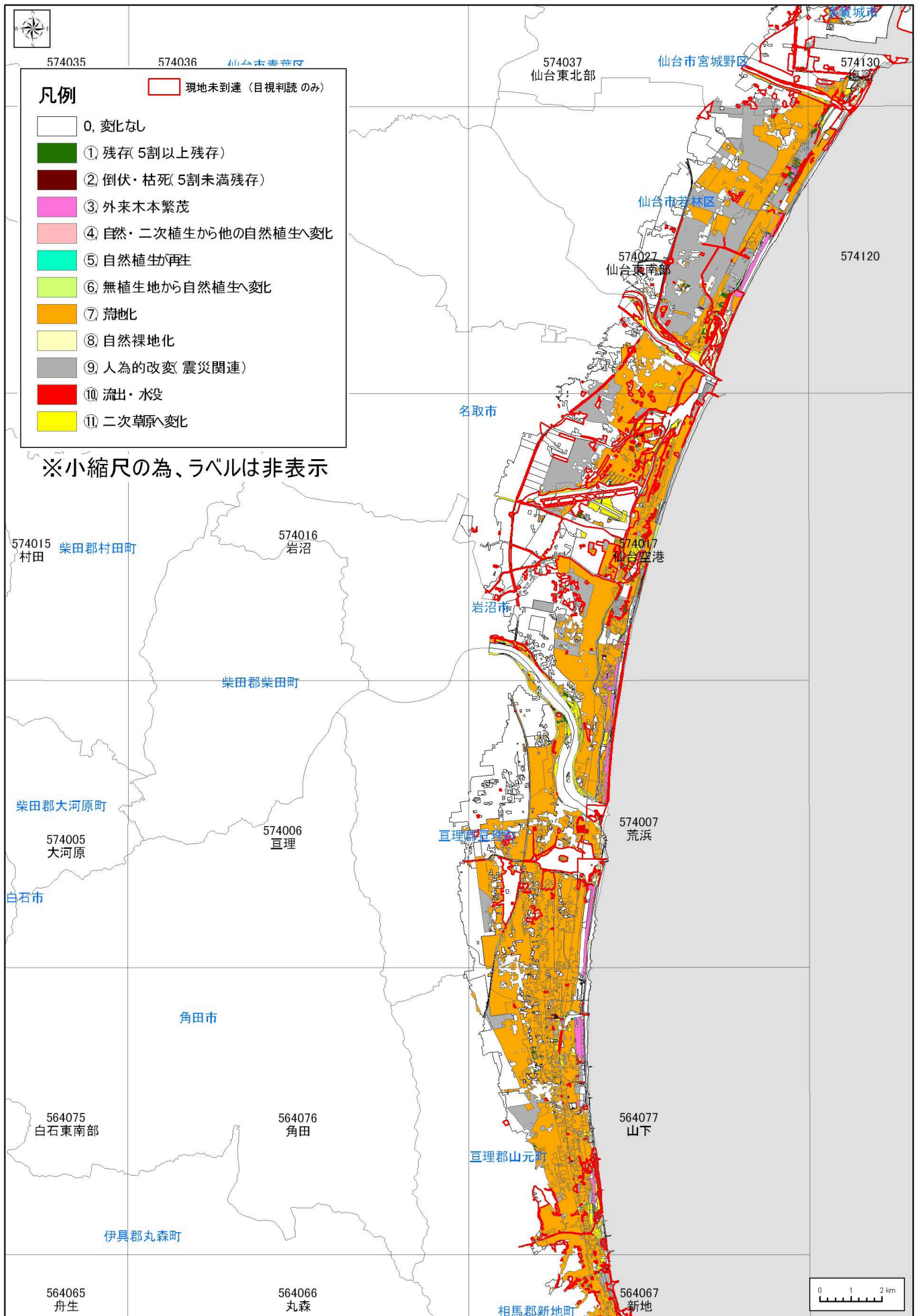


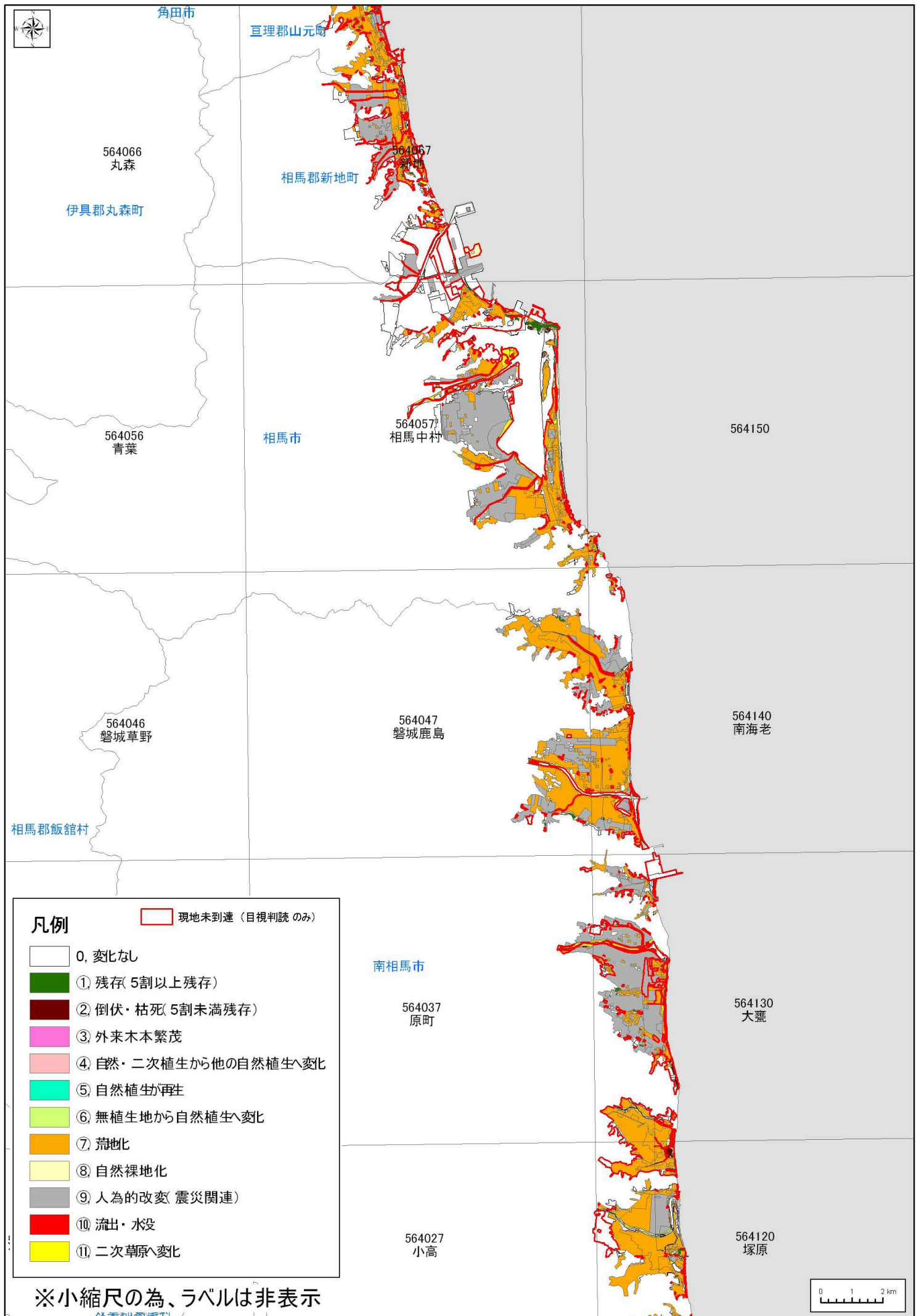


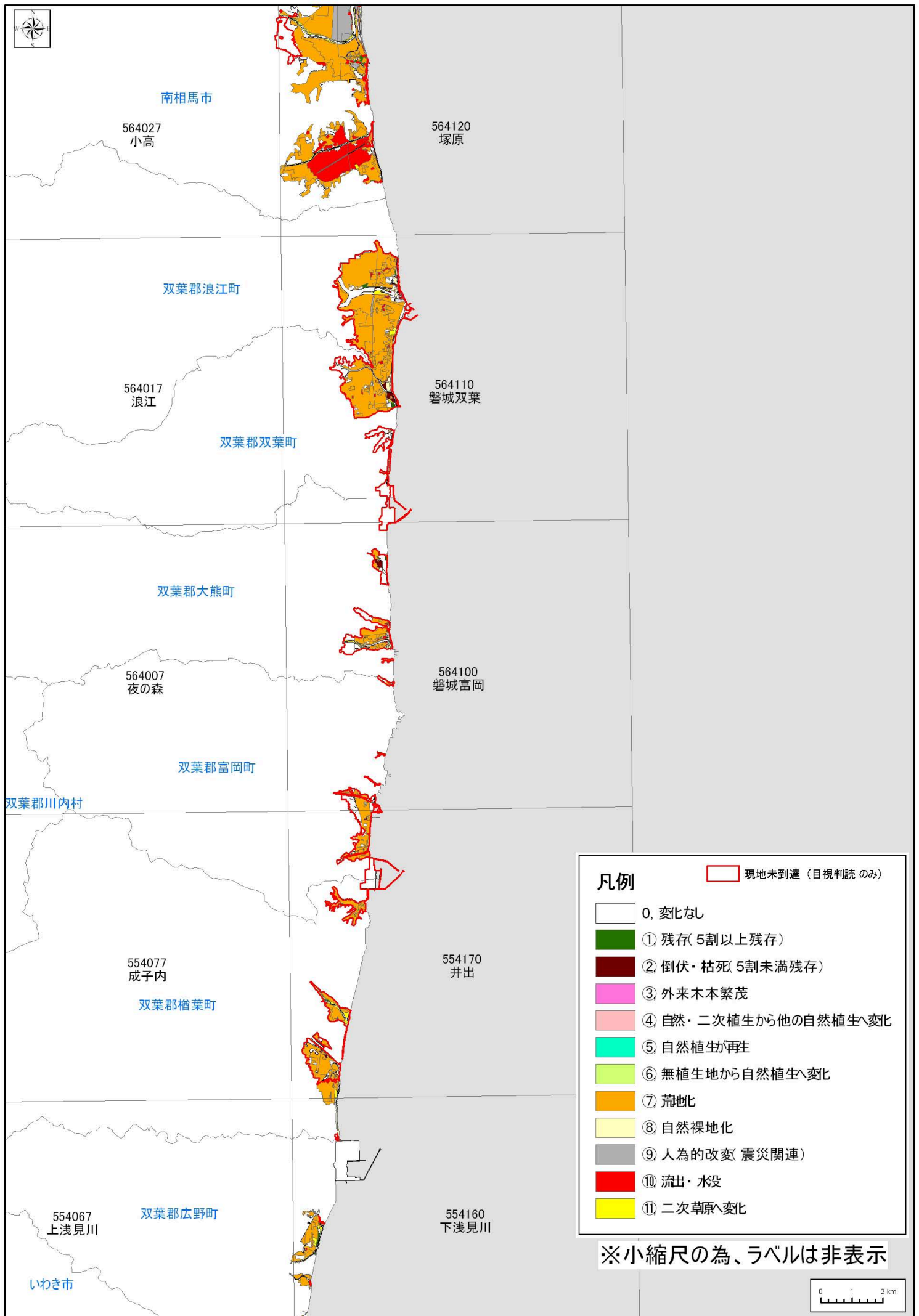












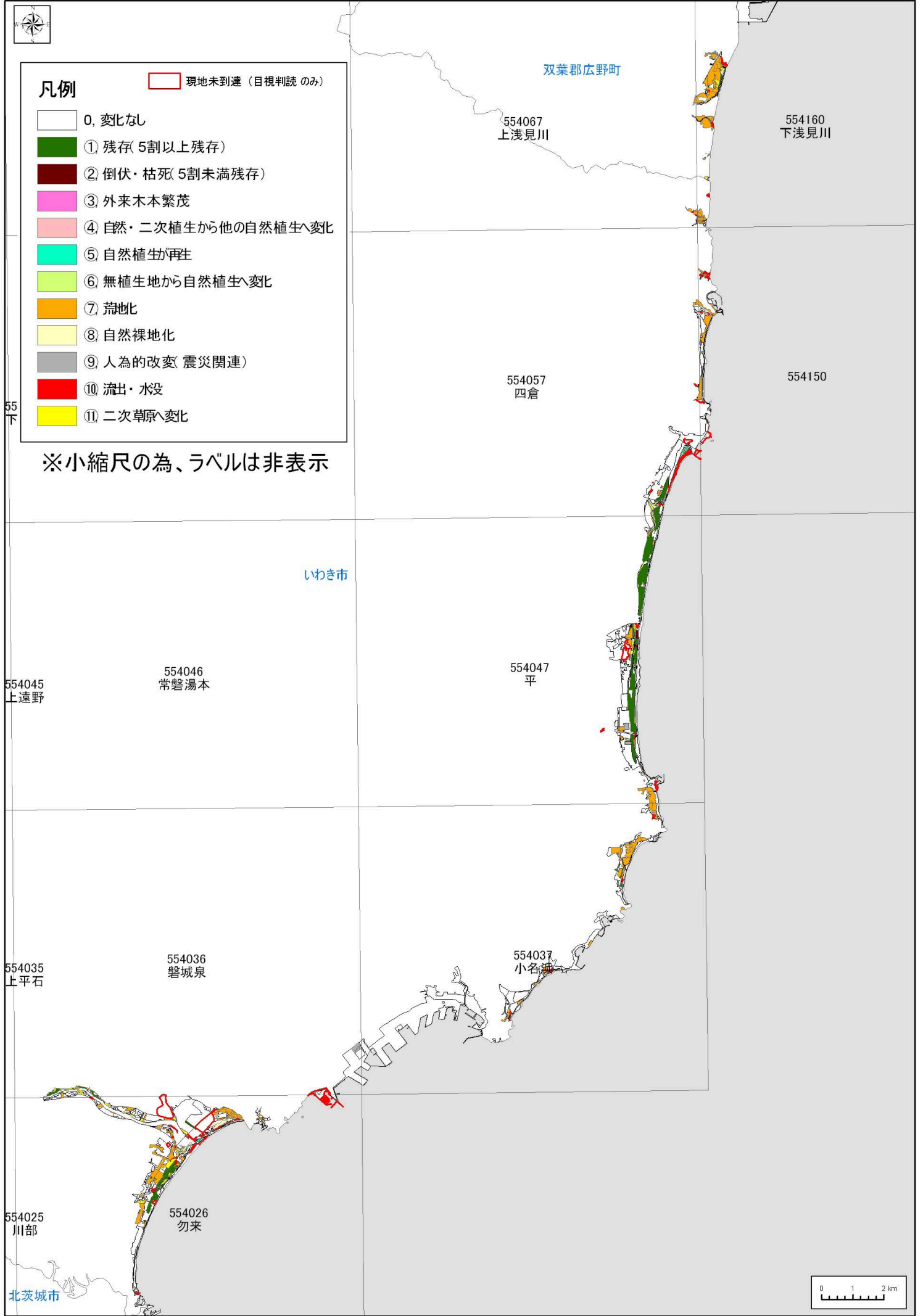


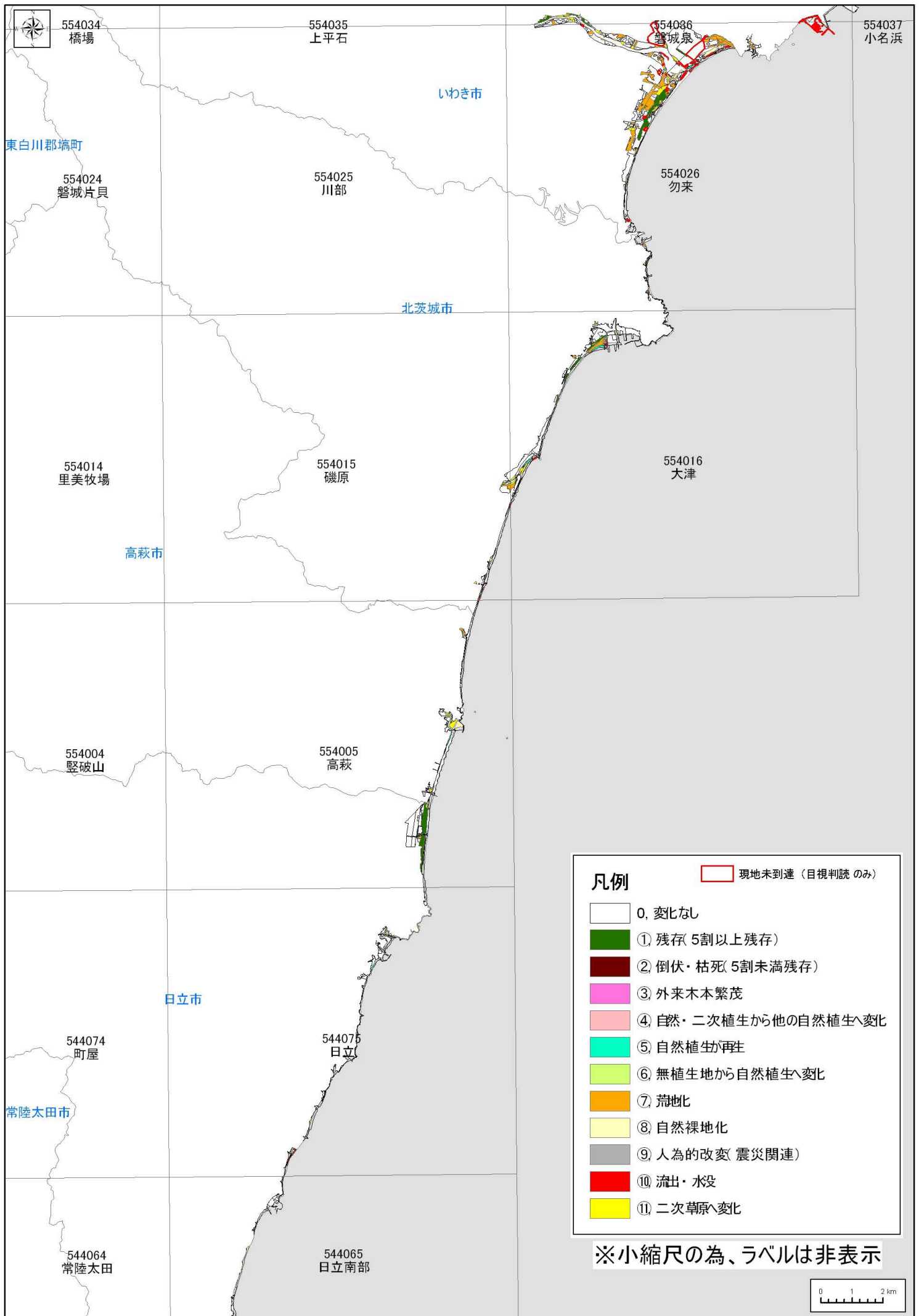
凡例

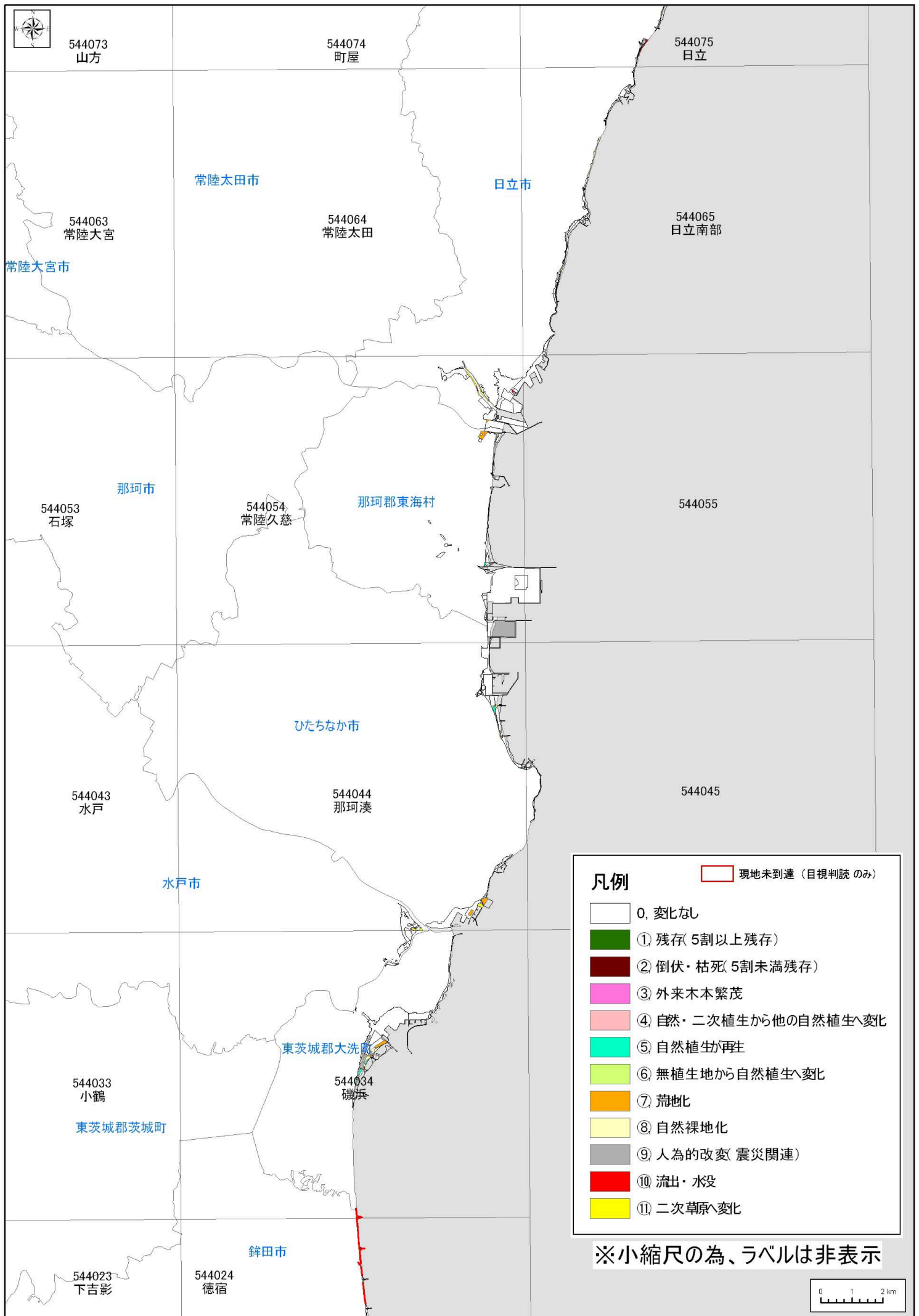
現地未到達 (目視判読のみ)

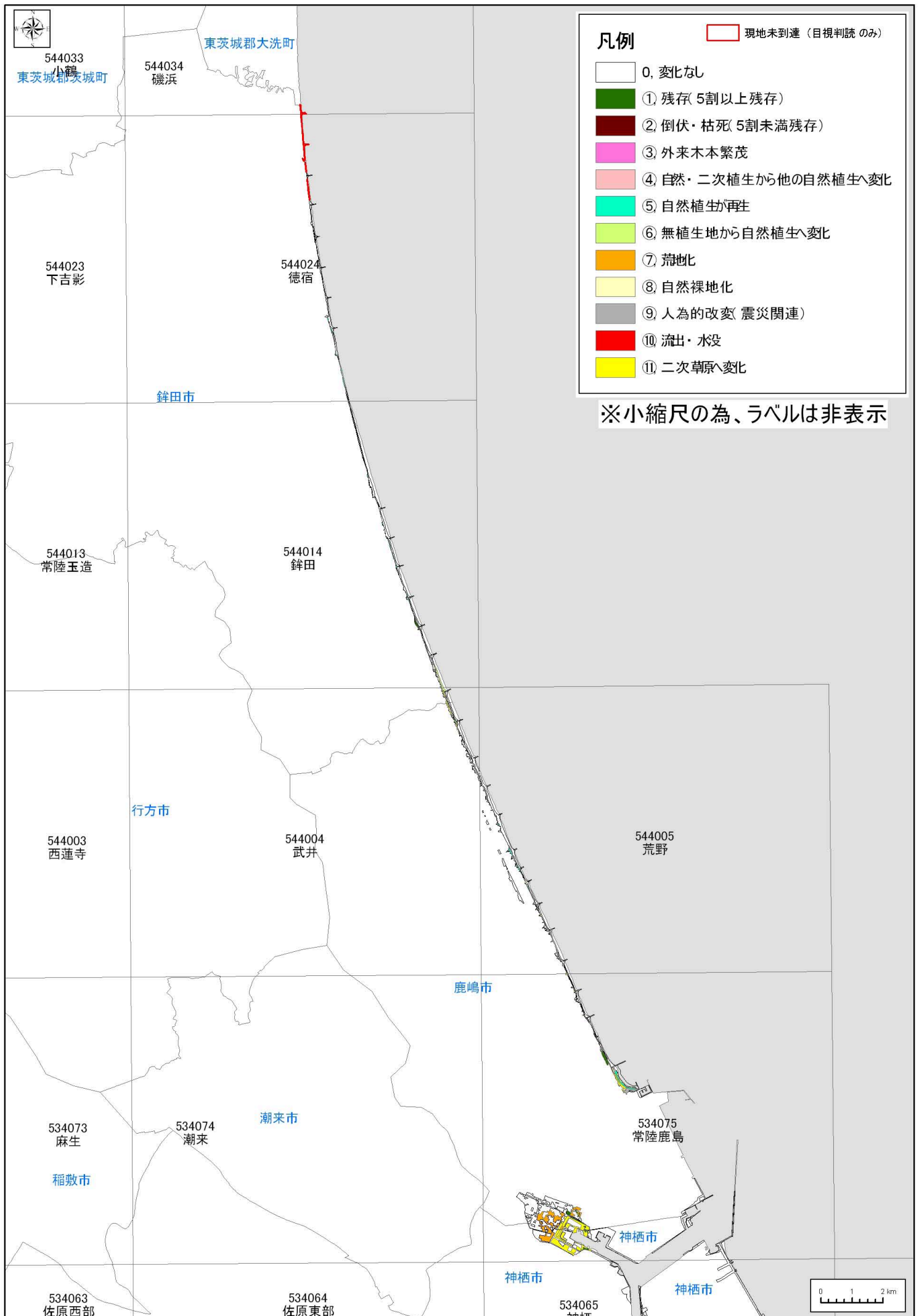
- 0, 変化なし
- ① 残存(5割以上残存)
- ② 倒伏・枯死(5割未満残存)
- ③ 外来木本繁茂
- ④ 自然・二次植生から他の自然植生へ変化
- ⑤ 自然植生が再生
- ⑥ 無植生地から自然植生へ変化
- ⑦ 荒地化
- ⑧ 自然裸地化
- ⑨ 人為的改変(震災関連)
- ⑩ 流出・水没
- ⑪ 二次草原へ変化

※小縮尺の為、ラベルは非表示









資4-17

